

Exhibitor Service Manual

KATY HOME & GARDEN SHOW

January 28-29, 2012

Merrell Center & Robinson Pavilion

Katy, TX

FREEMAN

SERVICE INFORMATION

BOOTH EQUIPMENT

Each 6' x 10', 8' x 10', 8' x 8', & 10' x 10' booth will be set with 8' high black back drape, 3' high black side drape, and a 7" x 44" one-line identification sign. **By order of the Fire Marshal, NOTHING MAY BE ATTACHED TO THIS DRAPE.**

EXHIBIT HALL CARPET

The exhibit area is not carpeted.

DISCOUNT PRICE DEADLINE DATE

Take advantage of discount pricing by ordering online at www.freemanco.com/store by January 12, 2012.

Save money by ordering services and labor in advance. All services including display and rigging labor orders placed at show site will be charged an additional 30% above the advance rate.

SHOW SCHEDULE

EXHIBITOR MOVE-IN

For more information and helpful hints on pre-show procedures and move-in, please go to www.freemanco.com/preshowFAQ

Thursday	January 26, 2012	9:00 AM - 5:00 PM
Friday	January 27, 2012	9:00 AM - 5:00 PM

Your specific move-in time will be sent to you via e-mail.

There is absolutely no driving on the floor of the Merrell Center. Vehicles will be allowed to drive into the Pavilion on Thursday and from 9:00 AM to Noon on Friday.

EXHIBIT HOURS

Saturday	January 28, 2012	10:00 AM - 6:00 PM
Sunday	January 29, 2012	11:00 AM - 5:00 PM

EXHIBITOR MOVE-OUT

For more information and helpful hints on post-show procedures and move-out, please go to www.freemanco.com/postshowFAQ

Sunday	January 29, 2012	5:05 PM - 8:00 PM
Monday	January 30, 2012	8:00 AM - 12:00 PM

DISMANTLE AND MOVE-OUT INFORMATION

All exhibitor materials must be removed from the exhibit facility by Monday, January 30, 2012 at 12:00 NOON.

To ensure all exhibitor materials are removed from the exhibit facility by the Exhibitor Move-Out deadline, please have all carriers check-in by Monday, January 30, 2012 at 10:00 AM.

POST SHOW PAPERWORK AND LABELS

Our Exhibitor Services Department will gladly prepare your outbound Material Handling Agreement and labels in advance. Be sure your carrier knows the company name and booth number when making arrangements for shipping your exhibit at the close of the show.

SERVICE CONTRACTOR CONTACTS / INFORMATION:

FREEMAN

13101 Almeda Rd
 Houston, TX 77045
 (713) 433-2400 fax (469) 621-5613
 FreemanHoustonES@freemanco.com

FREEMAN ONLINE®

Our Internet online ordering service, Freeman OnLine® is available for your convenience to order all Freeman Services, view show schedule, or print order forms. Once your show is available online you will receive an email which includes a direct link to Freeman OnLine®.

To place online orders you will be required to enter your unique Login ID and Password. If this is your first time to use Freeman OnLine®, click on the "Login" link in the top right corner to create a new account. To access Freeman OnLine® without using the email link, visit www.freemanco.com/store/ and click the "Login" link in the top right corner. If you need assistance with Freeman OnLine® please call our Customer Support Center at (888) 508-5054 Toll Free US & Canada or (817) 607-5000 Local & International.

SHIPPING INFORMATION

Warehouse Shipping Address:

Exhibiting Company Name / Booth # _____

KATY HOME & GARDEN SHOW

C/O FREEMAN
 13101 ALMEDA RD
 HOUSTON, TX 77045

Freeman will accept crated, boxed or skidded materials beginning Tuesday, December 27, 2011, at the above address. Material arriving after January 20, 2012 will be received at the warehouse with an additional after deadline charge. Warehouse materials are accepted at the warehouse Monday through Friday between the hours of 8:00 AM - 4:30 PM.

The warehouse will be closed on Monday, January 2, 2012 for New Year's.

Show Site Shipping Address:

Exhibiting Company Name / Booth # _____

KATY HOME & GARDEN SHOW

C/O FREEMAN
 LEONARD E MERRELL CENTER & ROBINSON PAVILION
 428 FM 1463
 KATY, TX 77494

Freeman will receive shipments at the exhibit facility beginning Thursday, January 26, 2012 at 9:00 AM. Shipments arriving before this date may be refused by the facility. Any charges incurred for early freight accepted by the facility are the responsibility of the Exhibitor.

Please note: All items and materials that must be brought into the facility may be subject to Material Handling Charges and are the responsibility of the Exhibitor. This also applies to items not ordered through the Official Show Vendors.

LABOR INFORMATION

Booth Installation & Dismantle: If utilizing Freeman labor, please refer to the Installation & Dismantle order form to place your order for display labor. Straight time and Overtime hours are also listed on the order form. Exhibitors supervising Freeman labor will need to pick up and release their labor at the Service Desk.

MATERIAL HANDLING OVERTIME CHARGES

*Freight moved into the facility after 4:30 PM on Thursday, January 26 or Friday, January 27, 2012 will be subject to overtime rates.

*Freight moved out of the facility on Sunday, January 29, 2012 will be subject to overtime rates.

ASSISTANCE

We want you to have a successful show. If we can be of assistance, please call our Exhibitor Services Department at (713) 433-2400.

WE APPRECIATE YOUR BUSINESS!

FREEMAN GENERAL INFORMATION

TRANSLATION SERVICES

Freeman is pleased to offer a new service for our international exhibitors that provides quick interpretation and translation in 150 languages. This service will not only interpret for us on a three way conversation, but also translate emails from customers. To access this feature you may contact Freeman Exhibitor Services at (713) 433-2400 or Freeman's Customer Support Center at (888) 508-5054 Toll Free US & Canada or (817) 607-5000 Local & International.

HELPFUL HINTS

SAVE MONEY

Order early to take advantage of advance order discount rates, place your order by January 12, 2012.

AVOID DELAY

Ship early to avoid delays. Shipments arriving late at show site will cost you money, time and business!

SAFETY TIPS

Use a ladder, not a chair. Standing on chairs, tables and other rental furniture is unsafe and can cause injury to you or to others. These objects are not designed to support your standing weight.

Be aware of your surroundings. You are in an active work area with changing conditions during move-in and move-out. Pay attention. Look for obstacles, machinery and equipment that are in use.

Keep your eyes open for scooters and forklifts. The drivers of these vehicles may not be able to see you.

Stay clear of dock areas, trucks and trailers. These areas can be particularly dangerous.

Prevent electrical shocks, falling items and damage to materials. Do not attach items or equipment to the drapes or metal framework provided for your booth. This can cause serious injury or damage to materials.

We discourage children from being in the exhibit hall during installation and dismantle. If children are present during installation and dismantle, they must be supervised by an adult at all times.

Freeman does not ship or handle Hazardous Materials. If any materials you are shipping to the event fall into this category, please contact Freeman to be sure the material will be allowed at the facility and by the association. In addition, if authorized by the facility and the association, you will need to make separate arrangements for the transport and handling of the approved materials, since Freeman will not transport or handle them.

The operation or use of all motorized lifts and motorized material handling equipment for installation/dismantle of exhibits is NOT permitted by exhibitors or by their exhibitor appointed contractors (EAC's). Thank you for your cooperation.

EXHIBITOR ASSISTANCE

For more information and helpful hints on pre-show procedures and move-in, please go to www.freemanco.com/preshowFAQ.

For more information and helpful hints on post-show procedures and move-out, please go to www.freemanco.com/postshowFAQ.

Call Freeman's Exhibitor Services department at (713) 433-2400 with any questions or needs you may have.

welcome



Welcome to Freeman, the industry's leading service contractor with more than 75 years of experience creating possibilities for our customers. At Freeman, our people make the difference, and when it comes to all the details of your show experience, our helpful employees have the expertise to ensure you always get your needs met exactly as specified. Above all, we take pride in putting you and your show requirements first, from furniture rental to material handling to custom exhibit programs, exhibit transportation, hanging signs and digital graphics. Whatever your exhibit requires, we have the premier resources to help you have the best show experience possible. Here are just a few of the outstanding services we are proud to offer you:

- Furnishings
- Carpet and Cleaning
- Freight and Material Handling Services
- Exhibit Transportation
- Rental Exhibit Programs
- Installation and Dismantle Services and Labor
- Digital Graphics and Signs

In addition, for some innovative design suggestions to help complement your exhibit, go to www.freemanco.com/furniturerepairing and visit our Furniture Grouping Ideas section. You'll find everything you need to give your booth a coordinated and professional look.

WELCOME TO Freeman

how do I get started?

To get started, first take a look at Quick Facts highlighting your show specifics and other information you will find useful. Then, browse through our catalogs for the many services we offer. When you determine what your specific needs are, fax or mail the order forms or place your order online at www.myfreemanonline.com. As always, you may call one of our customer service experts at the number listed on Quick Facts for assistance. Please consult our General Information page for some important safety tips and other key facts about all the services we offer.

material handling and exhibit transportation

As the official service contractor for your show, Freeman is here to help you with all your material handling needs, which include exhibit material unloading, 30-day advance storage at the warehouse address, delivery to the booth and handling of empty containers to and from storage. When the event is finished, we also provide material removal from the booth for reloading onto outbound carriers. Freeman can also handle your inbound exhibit transportation to ensure your freight is shipped on-time to the show site or warehouse, based on your preference. For questions about material handling and other information, go to www.freemanco.com/FAQ.

questions?

Contact customer service at the number located on Quick Facts for any ordering questions you might have. For all other inquiries about Freeman, please call our customer service center at 888-508-5054. For fast, easy ordering, tools and helpful hints, go to www.myfreemanonline.com.

F R E E M A N

13101 Almeda Rd.
Houston, Texas 77045
Ph: 713-433-2400 • Fax: 469-621-5613
FreemanHoustonES@freemanco.com

**DISCOUNT PRICE
DEADLINE DATE
JANUARY 12, 2012**

**INCLUDE THIS FORM
WITH YOUR ORDER**

NAME OF SHOW: **KATY HOME & GARDEN SHOW / JANUARY 28-29, 2012**

COMPANY NAME: _____ BOOTH#: _____

ADDRESS: _____ BOOTH SIZE: _____ X

CITY/STATE/ZIP: _____ CUSTOMER #: _____

PHONE #: _____ EXT.: _____ FAX #: _____

SIGNATURE: _____ PRINT NAME: _____

CONTACT'S E-MAIL _____

E-MAIL FOR INVOICE _____ CHECK IF YOU ARE A NEW FREEMAN CUSTOMER
Invoices will be sent by e-mail; please provide the e-mail address of the person who reconciles your invoices if different than contact's email.

METHOD OF PAYMENT

BY SUBMITTING THIS FORM OR ORDERING MATERIALS OR SERVICES FROM FREEMAN, YOU AGREE TO BE BOUND BY ALL TERMS & CONDITIONS INCLUDED IN YOUR SERVICE MANUAL.

COMPANY CHECK
 Please make check payable to: Freeman. Checks must be in U.S. funds drawn on a U.S. or Canadian bank. ("US. FUNDS" MUST BE PRE-PRINTED on Canadian checks.)
Please reference (282225) on your remittance.

BANK TRANSFER
 Bank Transfer to Bank of America, N.A.; Dallas, TX
Wire Transfer
 ABA#: 026009593 ACCT #1252039192 Freeman
International Wire Transfer
 Swift Code: BOFAUS3N ACCT #1252039192 Freeman
ACH Direct Deposit
 ABA# 111000012 ACCT #1252039192 Freeman

CREDIT CARD
 For your convenience, we will use this authorization to charge your credit card account for your advance orders, and any additional amounts incurred as a result of show site orders placed by your representative. These charges may include all Freeman companies, or any charges which Freeman may be obligated to pay on behalf of Exhibitor, including without limitation, any shipping charges. Please complete the information requested below:

Please reference Name of Show & Booth Number so we can properly credit your account.
Note: Customers are responsible for any bank processing fees.

AMERICAN EXPRESS **MASTERCARD** **VISA**

Account No.: _____ Exp. Date: _____

Cardholder Name (Print): _____ Signature: _____

Cardholder Billing Address: _____

City/State/Zip: _____

ENTER TOTALS HERE

FURNISHINGS & ACCESSORIES	CARPET	RENTAL EXHIBITS & ACCESSORIES	INSTALLATION LABOR	DISMANTLE LABOR	MATERIAL HANDLING		
RIGGING INSTALLATION	RIGGING DISMANTLE	HANGING SIGNS	SIGNS	EXHIBIT TRANSPORTATION			GRAND TOTAL

- Remember to order in advance to save time and money. You may place your order by phone, fax, mail, or use our online ordering service at: www.myfreemanonline.com.
- Orders received without payment or after the discount price deadline date will be charged at the standard price.
- Copies of invoices may be picked up from the Service Desk prior to show closing.
- If you have questions or need assistance with any items not listed, please call and ask for your Exhibitor Services Representative.

TELL US WHAT YOU THINK!

Freeman is committed to providing great customer service. To help us serve you more effectively in the future, please visit the URL address below upon the completion of your show to provide feedback. Your input will provide the insight needed to ensure that our customer service is in line with your expectations.

<http://feedback.freemanco.com/?282225>

FREEMAN method of payment

F R E E M A N

13101 Almeda Rd
Houston, TX 77045
(713) 433-2400 Fax: (469) 621-5613
FreemanHoustonES@freemanco.com

KATY HOME & GARDEN SHOW / JANUARY 28-29, 2012

In order to authorize Freeman to invoice a third party for payment of services rendered to exhibitors, both the exhibiting company and the third party must complete this form and return it at least 14 days prior to show move-in.

EXHIBITING COMPANY AUTHORIZATION OF THIRD PARTY BILLING

"We understand and agree that we, the exhibiting company, are ultimately responsible for payment of charges and agree by submitting this form or ordering materials or services from Freeman, to be bound by all terms and conditions as described in the Terms & Conditions section of this service manual. In the event that the named third party does not discharge payment of the invoice prior to the last day of the show, charges will revert back to the exhibiting company. All invoices are due and payable upon receipt, by either party. The items checked below are to be invoiced to the third party."

BY SUBMITTING THIS FORM OR ORDERING MATERIALS OR SERVICES FROM FREEMAN, YOU AGREE TO BE BOUND BY ALL TERMS & CONDITIONS INCLUDED IN YOUR SERVICE MANUAL.

EXHIBITOR NAME: (PLEASE PRINT)

EXHIBITOR SIGNATURE:

DATE:

EXHIBITING COMPANY INFORMATION

EXHIBITING COMPANY NAME:

BOOTH #:

EXHIBITING COMPANY ADDRESS:

CITY/STATE/ZIP:

PHONE:

EXT:

FAX:

CONTACT'S E-MAIL:

Indicate which services are to be invoiced to the Third Party:

- | | |
|---|---|
| <input type="checkbox"/> ALL FREEMAN SERVICES | <input type="checkbox"/> FREEMAN EXHIBIT TRANSPORTATION |
| <input type="checkbox"/> I&D LABOR/SUPERVISION | <input type="checkbox"/> RENTAL FURNITURE/CARPET/SIGNS |
| <input type="checkbox"/> MATERIAL HANDLING/IN & OUT | <input type="checkbox"/> BOOTH CLEANING |
| | <input type="checkbox"/> OTHER _____ |

THIRD PARTY COMPANY INFORMATION

THIRD PARTY COMPANY NAME:

CONTACT NAME:

THIRD PARTY BILLING ADDRESS:

CITY/STATE/ZIP:

PHONE:

EXT:

FAX:

CONTACT'S E-MAIL:

E-MAIL FOR INVOICE:

Invoices will be sent by e-mail; please provide the e-mail address of the person who reconciles your invoices if different than contact's e-mail.

THIRD PARTY CREDIT CARD AUTHORIZATION

- AMERICAN EXPRESS MASTERCARD VISA

CREDIT CARD ACCOUNT NO:

EXP. DATE:

CARDHOLDER NAME (PLEASE PRINT):

CARD TYPE:

AUTHORIZED SIGNATURE:

CARDHOLDER BILLING ADDRESS:

CITY/STATE/ZIP:

05/10 (282225)

FREEMAN third party authorization

furnishings



We have a wide selection of superior, custom furniture pieces in eye-catching shapes and styles to suit any budget and design. In addition, the quality control standards and in-house maintenance that Freeman adheres to are outstanding, so you always know you're getting the best furniture possible to make your show experience a total success. Our prices are all-inclusive and cover shipping and material handling, with no hidden fees. With multiple warehouse locations across the country, we always make sure you get exactly what you're looking for.



a. forestdale chair
21"W 21"L 31"H – N71085

b. black diamond armchair
20"W 21"L 33"H – N71090

c. black diamond side chair
21"W 23"L 32"H – N71089

d. black diamond stool
22"W 18"L 46"H – N71088



e. studio cocktail table
36"W 20"L 15"H – C115103

f. studio end table
17"W 17"L 18"H – C115104



g. display cylinders*
Black

low
30"W 15"H – N75020

medium
18"W 20"H – N75021

high
24"W 36"H – N75022

*Available in rectangular sizes.



h. orion computer kiosk
28"W 28"L 40.5"H – N75079
(Computer not included.)

i. pedestal tables

A range of tabletop sizes and materials with pedestals in various heights to fit any space.

soho series

Black-Top Mini	18"H x 18"W	N72066
Black-Top Cafe	30"H x 24"W	N72069
Black-Top Bistro	42"H x 24"W	N72070
Black-Top Cafe	30"H x 36"W	N72067
Black-Top Bistro	42"H x 36"W	N72068

chelsea series

Butcher Block-Top Cafe	30"H x 30"W	N72063
	30"H x 36"W	N72064
Butcher Block-Top Bistro	42"H x 30"W	N720163
	42"H x 36"W	N720164



j. limerick® chair

By Herman Miller
 Gray
 18"W 18"L 33"H – C210108



k. casey padded stool

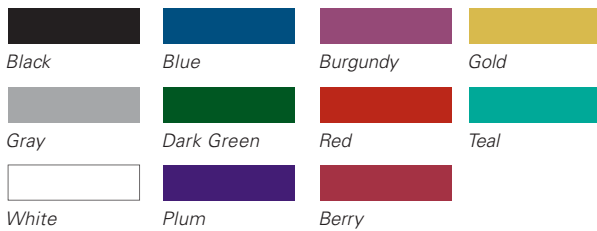
Black or Gray Fabric
 20"W 21.5"L 42.5"H – C210112



l. draped or undraped tables & counters

Colored draping includes white vinyl top and pleated skirt on three sides. Fourth-side draping is available. Undraped tables include white vinyl tops.

tables (30" height)	3'	4'	6'	8'
Draped	C130330	C130430	C130630	C130830
Draped on fourth side			C1240630	C12404830
Undraped	C131330	C131430	C131630	C131830
counters (42" height)				
Draped	C130342	C130442	C130642	C130842
Draped on fourth side			C12404642	C12404842
Undraped	C131342	C131442	C131642	C131842



Tabletop risers are also available in a variety of sizes. See order form for details.

questions?

Call customer service at the number listed on Quick Facts. For fast, easy ordering, visit us at www.freemanco.com.



F R E E M A N

13101 Almeda Rd
Houston, TX 77045
(713) 433-2400 Fax: (469) 621-5613
FreemanHoustonES@freemanco.com

DISCOUNT PRICE
DEADLINE DATE
JANUARY 12, 2012

INCLUDE THE FREEMAN METHOD OF
PAYMENT FORM WITH YOUR ORDER

NAME OF SHOW: **KATY HOME & GARDEN SHOW / JANUARY 28-29, 2012**

COMPANY NAME: _____ BOOTH #: _____ BOOTH SIZE: **X**

CONTACT NAME : _____ PHONE #: _____

E-MAIL ADDRESS : _____

For Assistance, please call (713) 433-2400 to speak with one of our experts

For fast, easy ordering, go to www.freemanco.com/store

FURNISHINGS

Qty	Part #	Description	Discount Price	Standard Price	Total
PAGE 1					
___	N71085	Forestdale Chair	112.20	132.60	___
___	N71088	Black Diamond Stool	124.30	146.90	___
___	N71089	Black Diamond Side Chair	105.60	124.80	___
___	N71090	Black Diamond Arm Chair	137.50	162.50	___
___	C115103	Studio Black Cocktail Table	107.80	127.40	___
___	C115104	Studio Black End Table	77.00	91.00	___
___	N75079	Orion Computer Kiosk	337.70	399.10	___

Display Cylinders					
___	N75020	Black Display Cylinder/Low	184.80	218.40	___
___	N75021	Black Display Cylinder/Med...	213.40	252.20	___
___	N75022	Black Display Cylinder/Lg	250.80	296.40	___

PAGE 2					
___	C210108	Limerick® Chair by Herman Miller	47.30	55.90	___
___	C210112	Casey Padded Stool	99.00	117.00	___
<input type="checkbox"/> Black <input type="checkbox"/> Gray					

Pedestal Tables - SoHo Series					
___	N72066	Black-top Mini 18"W x 18"H	100.10	118.30	___
___	N72069	Black-top Cafe 24"W x 30"H ...	162.80	192.40	___
___	N72070	Black-top Bistro 24"W x 42"H ..	167.20	197.60	___
___	N72067	Black-top Café Table 36"x30" ..	162.80	192.40	___
___	N72068	Black-top Bistro Table 36"x42..	167.20	197.60	___

Pedestal Tables - Chelsea Series - Butcher Block Top					
___	N72063	Café Table 30"W x 30"H	162.80	192.40	___
___	N72064	Café Table 36"W x 30"H	162.80	192.40	___
___	N720163	Bistro Table 30"W x 42"H	167.20	197.60	___
___	N720164	Bistro Table 36"W x 42"H	167.20	197.60	___

Qty	Part #	Description	Discount Price	Standard Price	Total
PAGE 2 (continued)					
Draped Tables - Tables are 30" wide					
<input type="checkbox"/> Black <input type="checkbox"/> Blue <input type="checkbox"/> Burgundy <input type="checkbox"/> Dark Green <input type="checkbox"/> Gold <input type="checkbox"/> Gray <input type="checkbox"/> Plum <input type="checkbox"/> Red <input type="checkbox"/> Teal <input type="checkbox"/> White					
___	C130330	Draped Table 3'L x 30"H	84.70	100.10	___
___	C130430	Draped Table 4'L x 30"H	95.70	113.10	___
___	C130630	Draped Table 6'L x 30"H	113.30	133.90	___
___	C130830	Draped Table 8'L x 30"H	136.40	161.20	___
___	C12404630	4th Side Drape 6'L x 30"H	31.90	37.70	___
___	C12404830	4th Side Drape 8'L x 30"H	31.90	37.70	___
___	C130342	Draped Counter 3'L x 42"H ...	125.40	148.20	___
___	C130442	Draped Counter 4'L x 42"H ...	136.40	161.20	___
___	C130642	Draped Counter 6'L x 42"H ...	151.80	179.40	___
___	C130842	Draped Counter 8'L x 42"H ...	174.90	206.70	___
___	C12404642	4th Side Drape 6'L x 42"H	38.50	45.50	___
___	C12404842	4th Side Drape 8'L x 42"H	38.50	45.50	___

Undraped Tables - Tables are 30" wide					
___	C131330	Undraped Table 3'L x 30"H ..	39.60	46.80	___
___	C131430	Undraped Table 4'L x 30"H ..	48.40	57.20	___
___	C131630	Undraped Table 6'L x 30"H ..	57.20	67.60	___
___	C131830	Undraped Table 8'L x 30"H ..	66.00	78.00	___
___	C131342	Undraped Counter 3'Lx42"H	59.40	70.20	___
___	C131442	Undraped Counter 4'Lx42"H	67.10	79.30	___
___	C131642	Undraped Counter 6'Lx42"H	79.20	93.60	___
___	C131842	Undraped Counter 8'Lx42"H	88.00	104.00	___

MISCELLANEOUS					
___	C220134	Chrome Easel	44.00	52.00	___
___	220106	Corrugated Wastebasket.....	13.00	16.90	___

Special Drape					
<input type="checkbox"/> Black <input type="checkbox"/> Blue <input type="checkbox"/> Burgundy <input type="checkbox"/> Dark Green <input type="checkbox"/> Gold <input type="checkbox"/> Gray <input type="checkbox"/> Plum <input type="checkbox"/> Red <input type="checkbox"/> Teal <input type="checkbox"/> White					
___	12103	Special Drape 3'H (per ft.)	17.60	20.80	___
___	12108	Special Drape 8'H (per ft.)	20.90	24.70	___

TOTAL COST					
___	Sub-Total	+	___	=	___
		8.25% Tax		Total Cost	

FREEMAN

13101 Almeda Rd.

Houston, Texas 77045

Ph: 713-433-2400 • Fax: 469-621-5613

FreemanHoustonES@freemanco.com

DEADLINE DATE
JANUARY 12, 2012

INCLUDE THE FREEMAN METHOD OF PAYMENT FORM WITH YOUR ORDER

NAME OF SHOW: **KATY HOME & GARDEN SHOW / JANUARY 28-29, 2012**

COMPANY NAME _____ BOOTH #: _____

CONTACT NAME: _____ PHONE #: _____

E-MAIL ADDRESS _____

For Assistance, please call 713-433-2400 to speak with one of our experts.

For fast, easy ordering, go to www.myfreemanonline.com/store

ACCESSORIES

PERFBOARD - SINGLE SIDED

Straight Hook - 10201 "J" Hook-10206

Single Hook - 10203 Double Hook - 10204

Glass Tower Showcase - 1010200

Comes with two doors that lock and three glass shelves.

10201484 - Bulletin Board
4' x 8' Horizontal

All boards are gray velcro and double sided.

1. Lessee will be responsible for any damages to display fixtures during the event.
2. There will be a replacement charge of \$10.00 on all lost keys.
3. Electrical hookup must be ordered through the Electrical order form included in your service manual.

15905 - Fish Bowl

101063 - 6'

STYLE #A FULL VISION CASE, includes 1-8" and 1-10" glass shelves with adjustable brackets, 26" high front glass display section. 6' Showcase comes with light fixture and locks.

10405 - Garment Rack

PERFBOARD

*Please circle choice of Perfboard

Horizontal Vertical

____ 173519 1M x 8'H Perfboard Panel*.. 231.00 300.30 _____
 ____ 173524 1/2Mx8'H Perfboard Panel*. 120.00 156.00 _____

SHOWCASES

____ 101063 Full Vision Case - 6'.....280.00 364.00 _____
 ____ 1010200 Glass Tower Case311.00 404.30 _____

MISCELLANEOUS

____ 10405	Garment Rack	83.00	107.90	_____
____ 15905	Fish Bowl.....	14.00	18.20	_____
____ 10201	2" Straight Hook (each)30	.40	_____
____ 10206	"J" Loop Hook (each).....	.30	.40	_____
____ 10203	6 "Single Hook (each).....	.30	.40	_____
____ 10204	6" Double Hook (each)	1.50	1.95	_____
____ 10201484	Bulletin Board	158.00	205.40	_____

Sub-Total _____ + Tax (8.25%) _____ = TOTAL _____

FREEMAN accessories

carpet



When it comes to making your exhibit stand out on the show floor, we have you covered. Freeman offers superior carpet options designed to fit the requirements of your exhibit space. With classic, custom or prestige carpet available to suit your needs, Freeman has endless carpet options to choose from. Here are some facts about our first-rate carpet service:

- Freeman uses only colorfast carpet, making it a consistent, matching shade every time
- Freeman employees supervise the laying of your carpet
- To ensure quality, we thoroughly inspect each refurbished carpet
- All of our carpet padding has recently been upgraded to above industry standards

prestige CARPET

Freeman Prestige Carpet combines plush comfort with durable soil and stain resistance, perfect for high-traffic areas. Six popular colors are available in a luxurious 40-ounce weight, and all 15 designer colors are available in a 28-ounce weight.

Freeman Prestige Carpet packages include brand-new, 10-foot-wide carpet, delivery, visqueen covering, installation, carpet tape, carpet removal and all carpet material handling fees. Price includes environmentally friendly disposal of carpet after usage. Foam padding is available for a minimal fee. If you have a large order, call to find out about our extra discounts.

custom options

Prestige Carpets can also be customized to fit your exhibit needs with unique logos, patterns and borders. Call the phone number on Quick Facts for assistance.



*white**



*sea breeze**



*gray pearl**



*charcoal**



*black**



*navy**



wedgewood



toast



cream



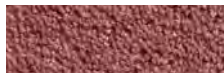
baywater



pine



cabernet



raspberry



peach



cardinal

***Colors available in both 28 oz. and 40 oz.**

classic CARPET

custom cut

Freeman Classic Carpet is available in a range of colors and includes delivery, visqueen covering, installation, carpet tape, carpet removal and all carpet material handling fees. Foam padding is available for a minimal fee. If you have a large order, call to find out about our extra discounts.

standard cut

Our Classic Carpet comes in a variety of sizes: 9' x 10', 9' x 20', 9' x 30', 9' x 40' and larger. Prices include delivery, installation, carpet tape, carpet removal and all carpet material handling fees. Foam padding and visqueen covering are available for a small surcharge. As always, there are no hidden fees.



gray



tuxedo



blue



black



red



plum



green



teal



burgundy

questions?

Call customer service at the number listed on Quick Facts. For fast, easy ordering, visit us at www.myfreemanonline.com.

Actual colors may vary slightly.

F R E E M A N

F R E E M A N

13101 Almeda Rd
Houston, TX 77045
(713) 433-2400 Fax: (469) 621-5613
FreemanHoustonES@freemanco.com

DISCOUNT PRICE
DEADLINE DATE
JANUARY 12, 2012

INCLUDE THE FREEMAN METHOD OF
PAYMENT FORM WITH YOUR ORDER

NAME OF SHOW: **KATY HOME & GARDEN SHOW / JANUARY 28-29, 2012**

COMPANY NAME: _____ BOOTH #: _____ BOOTH SIZE: _____ X

CONTACT NAME : _____ PHONE #: _____

E-MAIL ADDRESS :

For Assistance, please call (713) 433-2400 to speak with one of our experts.

- For FREE samples or a quote on **orders over 1200 sq. ft.** please call our Exhibitor Sales Department at (713) 433-2400.
- **No MATERIAL HANDLING charges apply.** Rental prices are for the duration of the show and include delivery to and removal from your booth space.
- **Orders received after the deadline or without payment will be charged the Standard Price and are subject to availability.** Prestige and Custom Cut Classic Carpet are subject to a 100% Cancellation Charge.

For fast, easy ordering, go to www.freemanco.com/store

PRESTIGE CARPET - includes plastic covering, delivery, material handling, installation and removal

- **Guaranteed new, high quality carpet available in a variety of designer colors.**

CHOOSE YOUR CARPET COLOR - 40 oz. Carpet:

- Black Charcoal Gray Pearl Navy Sea Breeze White

40 oz. Carpet Rental -		Price per sq. ft. (100 sq. ft. minimum)	Discount	Standard	Total
1 - 700 sq. ft.	Booth Size: _____ x _____ = _____ sq. ft. @		\$ 3.70	\$ 4.35	_____
701 - 1200 sq. ft.	Booth Size: _____ x _____ = _____ sq. ft. @		\$ 3.40	\$ 4.05	_____

CHOOSE YOUR CARPET COLOR - 28 oz. Carpet:

- Baywater Cardinal Gray Pearl Pine Toast
 Black Charcoal Navy Raspberry Wedgewood
 Cabernet Cream Peach Sea Breeze White

28 oz. Carpet Rental -		Price per sq. ft. (100 sq. ft. minimum)	Discount	Standard	Total
1 - 700 sq. ft.	Booth Size: _____ x _____ = _____ sq. ft. @		\$ 3.25	\$ 3.85	_____
701 - 1200 sq. ft.	Booth Size: _____ x _____ = _____ sq. ft. @		\$ 2.90	\$ 3.45	_____

CUSTOM CUT CLASSIC CARPET - includes plastic covering, delivery, material handling, installation and removal

- Our Custom Cut Classic Carpeting is available in custom cut sizes, and in a variety of standard colors.

CHOOSE YOUR CARPET COLOR:

- Black Blue Burgundy Gray Green Plum Red Teal Tuxedo

Rental - Price per square foot (100 sq. ft. minimum)

16 oz. Carpet Rental		Discount	Standard	Total
Per sq. ft.	Booth Size: _____ x _____ = _____ sq. ft. @	\$ 2.70	\$ 3.20	_____

CLASSIC CARPET - includes delivery, material handling, installation and removal

- Our 16 oz. Classic Carpeting is available in a variety of standard colors in the following standard sizes.

CHOOSE YOUR CARPET COLOR:

- Black Blue Burgundy Gray Green Plum Red Teal Tuxedo

Qty	Description	Discount	Standard	Total
_____	9' x 10' Classic Carpet	\$ 133.10	\$ 157.30	_____
_____	9' x 20' Classic Carpet	\$ 266.20	\$ 314.60	_____
_____	9' x 30' Classic Carpet	\$ 399.30	\$ 471.90	_____
_____	9' x 40' Classic Carpet	\$ 532.40	\$ 629.20	_____

CARPET PADDING AND PLASTIC COVERING - includes delivery, material handling, installation and removal

- Price is per sq. ft.

Qty	Description	Discount	Standard	Total
_____	Carpet Padding - 1/2" (90 - 700 sq. ft.).....	\$ 1.15	\$ 1.35	_____
_____	Carpet Padding - 1/2" (Over 700 sq. ft.).....	\$.75	\$.90	_____
_____	Plastic Covering	\$.75	\$.90	_____

TOTAL COST		
_____	+	_____
Sub- Total		8.25% Tax
		= _____
		Total Cost

****All utility lines must be installed before carpet installation. Utilities should be ordered in advance.****

FREEMAN carpet

FREEMAN

Houston, Texas 77045
(713) 433-2400 • Fax: (469) 621-5613
FreemanHoustonES@freemanco.com

DISCOUNT PRICE
DEADLINE DATE
JANUARY 12, 2012

INCLUDE THE FREEMAN METHOD OF
PAYMENT FORM WITH YOUR ORDER

NAME OF SHOW: **KATY HOME & GARDEN SHOW / JANUARY 28-29, 2012**

COMPANY NAME: _____ BOOTH#: _____

ADDRESS: _____ BOOTH SIZE _____ X _____

CITY/STATE/ZIP: _____ CUSTOMER # _____

PHONE #: _____ EXT.: _____ FAX #: _____

SIGNATURE: _____ PRINT NAME: _____

CONTACT'S E-MAIL _____

E-MAIL FOR INVOICE _____ CHECK IF YOU ARE A NEW FREEMAN CUSTOMER

For Assistance, please call 713-433-2400 to speak with one of our experts.

For fast, easy ordering, go to www.myfreemanonline.com

SAVE TIME AND MONEY WITH A SPECIAL FURNITURE PACKAGE

This package contains items most often ordered to create the proper selling environment in your exhibit space. Furthermore, these furnishings will be waiting for you in your booth when you arrive, saving you delays in setting up your exhibit. Save time and money by ordering by **January 12, 2012**. PLEASE NOTE: THERE ARE NO SUBSTITUTIONS ALLOWED.

This special package for each 8' x 10' or 10' x 10' booth includes:

- 1 - 6' x 30" Black Draped Table
- 1 - 8' x 10' or 9' x 10' Black Carpet
- 2 - Limerick Chairs
- 1 - Wastebasket

Indicate the number of 8' x 10' ____ or 10' x 10' booths ____ @ \$ 190.00 ea
= \$ _____

TOTAL COST -

Subtotal + 8.25% Tax = \$ Total Cost

QUICK TIPS FOR EASY EXHIBITING

- Remember to order in advance to save time and money.
- Orders received after the deadline date or without payment will be charged the standard price.
- If you have any questions or need assistance with any items not listed, please call and ask for your Exhibitor Sales Representative.

FREEMAN show package



installation & dismantle

When it comes to installation and dismantling of exhibits, no one does it better than Freeman. With more than 75 years of experience, our group of specialists is ready to assist you with all of your exhibit requests, from beginning to end.

Whether you choose to supervise or you need the assistance of a full-time Freeman employee, we can meet all your needs, from shipping and storage to emergency on-site repairs to basic installation and dismantling to support service coordination including electrical, furnishings and more. Freeman has the resources and the capabilities to help you have the most successful show experience possible.

do i need to order labor?

As an exhibitor, you are required to follow local labor jurisdictions. Please refer to the enclosed "Labor Jurisdictions" information sheet for details.

installation and dismantling services available

Freeman will work closely with you to coordinate every phase of your trade show participation, including:

- Preplanning and budget consultation
- Support service coordination – electrical, furnishings, floral and more
- Shipping and storage management
- On-site supervisors with dedicated floor managers
- Skilled labor and technicians for installation and dismantling
- Full, in-house carpentry
- Graphics production
- Emergency repairs and refurbishing
- Postshow evaluations
- Multiple show coordination

Supervise any labor yourself, or if you need assistance, Freeman I&D experts will do it for you.

if you use Freeman staff

Exhibits are set up prior to your arrival under the direction of Freeman I&D supervisors. We charge 30% of the total labor charge, with a minimum \$45 fee.

if you supervise yourself

Installation – Your labor supervisor must check in at the exhibitor service center to pick up laborers. Upon completion of work, your supervisor must return to the exhibitor service center to release the laborers. Start time is guaranteed only when labor is requested for the start of the working day.

Dismantling – When scheduling dismantling labor, be sure to allow time for empty containers to be returned to the booth after the close of your show. Start time is guaranteed only when labor is requested for the start of the working day.

questions?

Call customer service at the number listed on Quick Facts.

For fast, easy ordering, visit us at www.myfreemanonline.com.

UNION JURISDICTIONS IN HOUSTON

UNION REGULATIONS

To assist you in planning your participation in your Houston show, we are certain you will appreciate knowing in advance that union labor may be required for certain aspects of your exhibit handling. To help you understand the jurisdiction the various unions have, we ask that you read the following:

CARPENTERS LOCAL 551

Currently we have an agreement with the Carpenters Local 551 to provide labor for display installation and dismantling. Full time employees of the exhibiting companies however, may set their own exhibits without assistance from this local. Any local services that may be required beyond what your regular full time employees can provide, must be rendered by Local 551. Labor can be ordered in advance by filling out the Display Labor section in the THE FREEMAN order form, or on showsite, at THE FREEMAN Service Desk.

MATERIAL HANDLING

Exhibitors may hand-carry their own materials into the exhibit facility. The use or rental of dollies, flat trucks and other mechanical equipment, however, is not permitted. FREEMAN will control access to the loading docks in order to provide for a safe and orderly move-in/move-out.

TIPPING

FREEMAN requests that exhibitors do not tip our employees. They are paid at an excellent wage scale denoting a professional stature, and we feel that tipping is not necessary. This applies to all THE FREEMAN COMPANIES employees. Any request for such should be brought to the attention of a Freeman representative at THE FREEMAN Service Desk or correspondence may be directed to the attention of the General Manager at the local office address.

SAFETY

Standing on chairs, tables or other rental equipment is prohibited. This equipment is not engineered to support your weight. FREEMAN cannot be responsible for injuries or falls caused by the improper use of this equipment. If assistance is required in assembling your booth, please order labor in the Display Labor section in THE FREEMAN order form and the necessary ladders and/or tools will be provided.

NOTE:

- If you encounter any difficulty with any laborer, or if you are not satisfied with the work performed, please bring this to the attention of the Show Manager at FREEMAN. Please refrain from voicing complaints directly to craft personnel.
- The person in charge of your exhibit should carefully inspect and sign all work order forms. If there are any questions about any bills, bring the bill to the appropriate Service Desk and discuss it with the person in charge.

F R E E M A N

13101 Almeda Rd.
Houston, Texas 77045
Ph: 713-433-2400 • Fax: 469-621-5613
FreemanHoustonES@freemanco.com

DEADLINE DATE
JANUARY 12, 2012

INCLUDE THE FREEMAN METHOD OF PAYMENT FORM WITH YOUR ORDER

NAME OF SHOW: KATY HOME & GARDEN SHOW / JANUARY 28-29, 2012

COMPANY NAME _____ BOOTH #: _____

CONTACT NAME: _____ PHONE #: _____

E-MAIL ADDRESS _____

For Assistance, please call 713-433-2400 to speak with one of our experts.

For fast, easy ordering, go to www.myfreemanonline.com/store

DISPLAY LABOR (One Hour Minimum per Worker)

Description	Advance Price	Show Site Price
Straight Time- 8:00 A.M. to 4:30 P.M. Monday through Friday	\$ 70.50	\$ 91.65
Overtime- 6:00 A.M. to 8:00 A.M. and 4:30 P.M. to 12:00 Midnight Monday through Friday		
6:00 A.M. to 12:00 Midnight Saturday and Sunday	\$ 105.75	\$ 137.50
Double Time- 12:00 Midnight to 6:00 A.M. and recognized holidays.....	\$ 141.00	\$ 183.30

- Show Site prices will apply to all labor orders placed at show site.
- Price is per person/per hour.
- Start time guaranteed only at start of working day.
- One hour minimum per person - labor thereafter is charged in half (1/2) hour increments.
- Labor must be canceled in writing, 24 hours in advance to avoid a one (1) hour cancellation fee per worker.
- When scheduling dismantle labor, be sure to allow sufficient time for empty containers to be returned to your booth.
- Freeman supervised jobs will be completed at our discretion prior to show opening and before the hall must be cleared. **Please include setup plan/photo, special instructions & inbound shipping information with this order.**

INSTALLATION LABOR

- Freeman Supervised Labor - Please complete the reverse side of this form.**
- Installation of your exhibit will be completed at our discretion prior to show opening.
 - The charge for this service is 30% of the total installation labor bill, with a minimum of \$45.00.
- Emergency contact: _____ Phone Number: _____

- Exhibitor Supervised Labor** (Supervisor must check in at Service Desk to pick up labor)

Supervisor will be: _____ Phone Number: _____

Date	Start Time	No. of People	Approx. Hrs. per Person	Total Hrs.	Hourly Rate	Estimated Total Cost
_____	_____	_____ x	_____ =	_____	@ \$ _____ = \$ _____	_____
_____	_____	_____ x	_____ =	_____	@ \$ _____ = \$ _____	_____
_____	_____	_____ x	_____ =	_____	@ \$ _____ = \$ _____	_____
Freeman Supervision (30%/\$45.00)						= \$ _____
Tax						= \$ (N/A)
Total Installation						= \$ _____

DISMANTLE LABOR

- Freeman Supervised Labor - Please complete the reverse side of this form.**
- Freeman is not responsible for product or literature that is not properly packed and labeled by exhibitor.
 - The charge for this service is 30% of the total dismantle labor bill, with a minimum of \$45.00.
- Emergency contact: _____ Phone Number: _____

- Exhibitor Supervised Labor** (Supervisor must check in at Service Desk to pick up labor)

Supervisor will be: _____ Phone Number: _____

Date	Start Time	No. of People	Approx. Hrs. per Person	Total Hrs.	Hourly Rate	Estimated Total Cost
_____	_____	_____ x	_____ =	_____	@ \$ _____ = \$ _____	_____
_____	_____	_____ x	_____ =	_____	@ \$ _____ = \$ _____	_____
_____	_____	_____ x	_____ =	_____	@ \$ _____ = \$ _____	_____
Freeman Supervision (30%/\$45.00)						= \$ _____
Tax						= \$ (N/A)
Total Dismantle						= \$ _____

FREEMAN installation & dismantle

NAME OF SHOW: **KATY HOME & GARDEN SHOW / JANUARY 28-29, 2012**

COMPANY NAME: _____ BOOTH#: _____

CONTACT NAME: _____ PHONE#: _____

FREEMAN SUPERVISED LABOR

IN ORDER TO BETTER SERVE YOU - PLEASE COMPLETE THE FOLLOWING INFORMATION IF YOUR DISPLAY IS TO BE SET-UP AND/OR DISMANTLED BY FREEMAN I&D AND YOU WILL NOT BE PRESENT TO SUPERVISE THE INSTALLATION AND/OR DISMANTLE.

INBOUND SHIPPING & SET UP INFORMATION

Freight will be shipped to Warehouse _____ Show Site _____ Date Shipped _____

Total No. of: _____ Crates _____ Cartons _____ Fiber Cases _____

Setup Plan/Photo: Attached _____ To Be Sent With Exhibit _____ In Crate No. _____

Carpet: With Exhibit _____ Rented From Freeman _____ Color _____ Size _____

Electrical Placement: Drawing Attached _____ Drawing With Exhibit _____ Electrical Under Carpet _____

Comments: _____

Graphics: With Exhibit _____ Shipped Separately _____

Comments: _____

Special Tools/Hardware Required: _____

OUTBOUND SHIPPING INFORMATION

SHIP TO: _____

METHOD OF SHIPMENT

- Freeman Exhibit Transportation:**
 - Common Carrier
 - Air Freight Next Day 2nd Day Deferred Expedited
- Other (list carrier name & phone number):**
 - Other Common Carrier: _____
 - Other Air Freight: _____
 - Van Line: _____

FREIGHT CHARGES

- Prepaid Collect
- Bill To: _____
- _____
- _____

In the event your selected carrier fails to show on final move-out day, please select one of the following options:

- Reroute via Freeman's choice
- Deliver back to Freeman warehouse at Exhibitor's expense.

PLEASE NOTE: Freeman is not responsible for product or literature that is not properly packed and labeled by exhibitor.

FREEMAN installation & dismantle

WHAT ARE FREIGHT SERVICES?

As the official service contractor, Freeman is the exclusive provider of freight services. Material handling includes unloading your exhibit material, storing up to 30 days in advance at the warehouse address, delivering to the booth, the handling of empty containers to and from storage, and removing of material from the booth for reloading onto outbound carriers. It should not be confused with the cost to transport your exhibit material to and from the convention or event. You have two options for shipping your advance freight — either to the warehouse or directly to show site.

How do I ship to the warehouse?

- We will accept freight beginning 30 days prior to show move-in.
- To check on your freight arrival, call Exhibitor Services at the location listed on Quick Facts.
- To ensure timely arrival of your materials at show site, freight should arrive by the deadline date listed on Quick Facts. Your freight will still be received after the deadline date, but additional charges will be incurred.
- The warehouse will receive shipments Monday through Friday, except holidays. Refer to Quick Facts for warehouse hours. No appointment is necessary.
- The warehouse will accept crates, cartons, skids, trunks/cases and carpets. Loose or pad-wrapped material must be sent directly to show site.
- All shipments must have a bill of lading or delivery slip indicating the number of pieces, type of merchandise and weight.
- Certified weight tickets must accompany all shipments.
- Warehouse freight will be delivered to the booth prior to exhibitor setup.
- Please call the number located on Quick Facts if you want to ship oversized material that requires special equipment to the warehouse.

How do I ship to show site?

- Freight will be accepted only during exhibitor move-in. Please refer to Quick Facts for the specific exhibitor move-in dates and times.
- All shipments must have a bill of lading or delivery slip indicating the number of pieces, type of merchandise and weight.
- Certified weight tickets must accompany all shipments.

What about prepaid or collect shipping charges?

- Collect shipments will be returned to the delivery carrier.
- To ensure that your freight does not arrive collect, mark your bill of lading "prepaid."
- "Prepaid" designates that the transportation charges will be paid by the exhibitor or a third party.

How should I label my freight?

- The label should contain the exhibiting company name, the booth number and the name of the event.
- The specific shipping address for either the warehouse or show site is located on Quick Facts.

How do I estimate my Material Handling charges?

- Charges will be based on the weight of your shipment. Each shipment received is considered separately. The shipment weight will be rounded to the next 100 pounds. Each 100 pounds is considered one "cwt." (one hundred weight). All shipments are subject to reweigh.
- On the Order Form, select whether the freight will arrive at the warehouse or be sent directly to show site.
- Next, select the category that best describes your shipment. There are three categories of freight:

Crated: material that is skidded or is in any type of shipping container that can be unloaded at the dock with no additional handling required.

Special Handling: material delivered by the carrier in such a manner that it requires additional handling, such as ground unloading, stacked and constricted space unloading, designated piece unloading, loads mixed with pad-wrapped material, loads failing to maintain shipping integrity, carpet and/or pad-only shipments, and shipments that require additional time, equipment or labor to unload. Federal Express and UPS are included in this category due to their delivery procedures.

Uncrated: material that is shipped loose or pad-wrapped, and/or unskidded machinery without proper lifting bars or hooks.

- Add overtime charges for inbound if material is delivered to the booth during the overtime period stated on Quick Facts. This includes both warehouse and show-site shipments.

- Add overtime charges for outbound if material is loaded onto the outbound carrier during the overtime period stated on Quick Facts.
- Add the late delivery charge listed on the Order Form if the shipment is accepted at the warehouse or at show site after the deadline date listed on Quick Facts.
- The above services, whether used completely or in part, are offered as a package and the charges will be based on the total inbound weight of the shipment.
- Shipments received without receipts or freight bills, such as UPS and Federal Express, will be delivered to the booth without guarantee of piece count or condition.

What happens to my empty containers during the show?

- Pick up "Empty Labels" at the Service Center. Place a label on each container. Labeled containers will be picked up periodically and stored in non-accessible storage during the show.
- At the close of the show, the empty containers will be returned to the booth in random order. Depending on the size of the show, this process may take several hours.

How do I protect my materials after they are delivered to the show or before they are picked up after the show?

- Consistent with trade show industry practices, there may be a lapse of time between the delivery of your shipment(s) to your booth and your arrival. The same is true for the outbound phase of the show — the time between your departure and the actual pick-up of your materials. During these times, your materials will be left unattended. We recommend that you arrange for a representative to stay with your materials or that you hire security services to safeguard your materials.

How do I ship my materials after the close of the show?

- Each shipment must have a completed Material Handling Agreement in order to ship materials from the show. All pieces must be labeled individually.
- To save time, complete and submit the Outbound Shipping Form in advance, or you may contact the Service Center at show site for your shipping documents. The Material Handling Agreement and labels will be processed and available prior to show closing.
- After materials are packed, labeled, and ready to be shipped, the completed Material Handling Agreement must be turned in at the Service Center.
- Call your designated carrier with pick-up information. Please refer to Quick Facts for specific dates and times. In the event your selected carrier fails to show on final move-out day, your shipment will either be rerouted to Freeman's carrier choice or delivered back to the warehouse at exhibitor's expense.
- For your convenience, show-recommended carriers will be on site to handle outbound transportation.

Where do I get a forklift?

- Forklift orders to install or dismantle your booth after materials are delivered may be ordered in advance or at show site. We recommend that you order in advance to avoid additional charges at show site. Refer to the Order Form for available equipment.
- Advance and show-site orders for equipment and labor will be dispatched once a company representative signs the labor order at the Service Center.
- Start time is guaranteed only when equipment is requested for the start of the working day.

Do I need insurance?

- Be sure your materials are insured from the time they leave your firm until they are returned after the show. It is suggested that exhibitors arrange all-risk coverage. This can be done by riders to your existing policies.
- All materials handled by Freeman are subject to the enclosed Terms and Conditions.

Other available services (may not be available in all locations)

- Cranes
- Scissor lifts, condors
- Access storage at show site
- Exhibit transportation services (see enclosed brochure)
- Security storage at show site
- Short-term and long-term warehouse storage
- Local pick-up and delivery
- Priority empty return

F R E E M A N

F R E E M A N

13101 Almeda Rd.
Houston, Texas 77045
Ph: 713-433-2400 • Fax: 469-621-5613
FreemanHoustonES@freemanco.com

INCLUDE THE FREEMAN METHOD OF
PAYMENT FORM WITH YOUR ORDER

FREEMAN material handling

NAME OF SHOW: KATY HOME & GARDEN SHOW / JANUARY 28-29, 2012

COMPANY NAME _____ BOOTH #: _____

CONTACT NAME: _____ PHONE #: _____

E-MAIL ADDRESS _____

For Assistance, please call 713-433-2400 to speak with one of our experts.

Let Freeman OnLine® estimate your material handling charges for you. Log on to www.myfreemanonline.com, select your show and click on "Estimate My Material Handling Costs". From Freeman OnLine® you can print extra shipping labels, get tips on how to package your freight and much more.

MATERIAL HANDLING SERVICES

- CRATED:** Material that is skidded or is in any type of shipping container that can be unloaded at the dock with no additional handling required.
- SPECIAL HANDLING:** (See definitions on back) Material delivered by a carrier in such a manner that it requires additional handling, such as ground unloading, stacked or constricted space unloading, designated piece unloading, shipment integrity, alternate delivery location, loads mixed with pad wrapped material, carpet and/or pad only shipments, no documentation and shipments that require additional time, equipment or labor to unload. **Federal Express, UPS, Airborne Express & DHL** are included in this category due to their delivery procedures.
- UNCRATED:** Material that is shipped loose or pad-wrapped, and/or unskidded machinery without proper lifting bars or hooks.
- STRAIGHT TIME:** 8:00 A.M. to 4:30 P.M. Monday through Friday
- OVERTIME:** 4:30 P.M. to 8:00 A.M. Monday through Friday, all day Saturday, Sunday, and Holidays (Overtime will be applied to all freight received at the warehouse and/or show site that must be moved into or out of booth during above listed times.)

Description	Price Per CWT	200 lb. Minimum
-------------	---------------	-----------------

RATE CLASSIFICATIONS:

Warehouse Shipment (200 lb. minimum)		
Crated or Skidded Shipment.....	\$ 58.00	116.00
Special Handling Shipment.....	\$ 75.40	150.80
Show Site Shipment (200 lb. minimum).....		
Crated or Skidded Shipment.....	\$ 56.00	112.00
Special Handling Shipment.....	\$ 72.80	145.60
Uncrated or Pad Wrapped Shipment.....	\$ 84.00	168.00
Small Package - Maximum weight is 30 lbs per shipment*		
Per Shipment.....	\$ 40.50	

*A small package shipment is a shipment totaling any number of pieces with a combined weight not to exceed 30 lbs that is received on the same day, from the same shipper and delivered by the same carrier.

Cart Service - Intended for "privately owned vehicles"*

Per Trip.....\$ 65.00

*A "privately owned vehicle" is any vehicle that is primarily designated to transport passengers, not cargo or freight. Included in this category are: pick-up, passenger van, taxi and limousine.

ADDITIONAL SURCHARGES:

Shipment Delivered after Deadline Date (in addition to above rates)

Warehouse Shipment after Deadline.....	\$ 14.50	29.00
Show Site Shipment after Deadline.....	\$ 14.00	28.00

Overtime Charge - Inbound (in addition to above rates)

Crated or Skidded Shipment.....	\$ 14.00	28.00
Special Handling Shipment.....	\$ 18.20	36.40
Uncrated or Pad Wrapped Shipment.....	\$ 21.00	42.00

Overtime Charge - Outbound (in addition to above rates)

Crated or Skidded Shipment.....	\$ 14.00	28.00
Special Handling Shipment.....	\$ 18.20	36.40
Uncrated or Pad Wrapped Shipment.....	\$ 21.00	42.00

Mobile Spotting Fee..... \$250.00

Description	Weight	CWT	Price per CWT	Estimated Total Cost (200 lb. Min.)
	÷ 100 =			
Surcharges	÷ 100 =			

Tips to Save on Material Handling

- **Consolidate shipments** - when total weight is less than 200 lbs. For Example:
3 Separate Shipments

60 lbs. charged @ 200 lbs. \$ 97.00
52 lbs. charged @ 200 lbs. \$ 97.00
65 lbs. charged @ 200 lbs. \$ 97.00 = \$291.00

- 1 Consolidated Shipment
3 pieces (1 shipment)

177 lbs. charged @ 200 lbs = \$97.00

Added benefit - your shipments are less likely to get misplaced if they are packaged together with larger items.

Tax	n/a
Total	

SPECIAL HANDLING DEFINITIONS

for frequently asked questions and material handling estimator tools, go to www.myfreemanonline.com

Special handling applies to shipments that are loaded by cubic space and/or packed in such a manner as to require additional labor/handling, such as ground unloading, constricted space unloading, designated piece unloading, carpet/pad only shipments or stacked shipments. Also included are shipment integrity, alternate delivery locations, mixed shipments, and shipments without individual bills of lading. Shipments loaded in this manner require additional time, labor, or equipment, to unload, sort and deliver.

What is Ground Loading/Unloading?

Vehicles that are not dock height, preventing the use of loading docks, such as U-hauls, flat bed trailers, double drop trailers, company vehicles with trailers that are not dock level, etc.

What is Constricted Space Loading/Unloading?

Trailer loaded "high and tight" shipments that are not easily accessible. Freight is loaded to full capacity of trailer – top to bottom, side to side. One example of this is freight that is loaded down one side of a trailer that must be bypassed to reach targeted freight.

What is Designated Piece Loading/Unloading?

Drivers that require the loading crew to bring multiple pieces of the freight to the rear of the trailer to select the next piece, having to remove freight from the trailer then reload to fit or the trailer must be loaded in a sequence to ensure all items fit.

What are Stacked Shipments?

Shipments loaded in such a manner requiring multiple items to be removed to ground level for delivery to booth. Stacked or "cubed out" shipments, loose items placed on top of crates and/or pallets constitute special handling.

What is Shipment Integrity?

Shipment integrity involves shipments on a carrier that are intermingled, or delivered in such a manner that additional labor is needed to sort through and separate the various shipments on a truck for delivery to our customers.

What is Alternate Delivery Location?

Alternative delivery location refers to shipments that are delivered by a carrier that requires us to deliver some shipments to different levels in the same building, or to other buildings in the same facility.

What are Mixed Shipments?

Mixed shipments are defined as shipments of mixed crated and uncrated goods, where the percentage of uncrated is minimal and does not warrant the full uncrated rate for the shipment, but does require special handling. Freeman defines special handling for mixed loads as having less than 50% of the volume as uncrated.

What does it mean if I have "No Documentation"?

Shipments arrive from a small package carrier (including, among others, Federal Express, UPS, Airborne Express & DHL) without an individual Bill of Lading, requiring additional time, labor and equipment to process.

What about carpet only shipments?

Shipments that consist of carpet and/or carpet padding only require special handling because of additional labor and equipment to unload.

What is the difference between Crated and Uncrated Shipments?

Crated shipments are those that are packed in any type of shipping container that can be unloaded at the dock with no additional handling required. Such containers include crates, fiber cases, cartons, and properly packed skids. An uncrated shipment is material that is shipped loose or pad-wrapped, and/or unskidded without proper lifting bars and hooks.

F R E E M A N

13101 Almeda Rd.
Houston, Texas 77045
Ph: 713-433-2400 • Fax: 469-621-5613
FreemanHoustonES@freemanco.com

INCLUDE THE FREEMAN METHOD OF
PAYMENT FORM WITH YOUR ORDER

NAME OF SHOW: **KATY HOME & GARDEN SHOW / JANUARY 28-29, 2012**

COMPANY NAME: _____ BOOTH#: _____

ADDRESS: _____ BOOTH SIZE _____ X _____

PHONE #: _____ EXT.: _____ FAX # _____

ORDERED BY: _____ PRINT NAME: _____ DATE: _____

CUSTOMER # _____ OR CHECK BOX IF YOU ARE A NEW FREEMAN CUSTOMER

E-MAIL: _____

For Assistance, please call 713-433-2400 to speak with one of our experts

For fast, easy ordering, go to www.myfreemanonline.com/store

PRIVATELY OWNED VEHICLE CART SERVICE
Privately Owned Vehicle Cart Service
Rates and Procedures

Understanding that not all of our customers require standard material handling services, we have made accommodations for POVs. Please note that the definition of a POV or privately owned vehicle, is considered to be any vehicle that is primarily designed to transport passengers, not cargo or freight. Examples include pick-ups, passenger vans, taxis, limos, etc.

Cart Rate: \$65.00 per trip

Service to include:

Unloading and delivery of exhibit materials from the dock to booth.

Storage of empty containers during show hours and return of crates and containers at end of show.

Delivery of exhibit materials/containers from your booth to the dock and the loading of materials into vehicle.

Exhibitors will need to complete the Method of Payment form and provide a credit card for imprint at the time of service.

Exhibitors who require this service must check in at the designated Cart service area.

EXHIBITOR MOVE-IN

Thursday	January 26, 2012	9:00 AM	-	5:00 PM
Friday	January 27, 2012	9:00 AM	-	5:00 PM

All exhibits must be fully installed by Friday, January 27, 2012 at 5:00 PM.

PLEASE CHECK DESIRED SERVICE:

Inbound

Approximate number of pieces: _____

Move-In day you will require this service: _____

Outbound

Approximate number of pieces: _____

The above rates and procedures apply **ONLY** to passenger size vehicles. **NO** trucks or commercial vehicles will be unloaded at these rates. See the enclosed Material Handling Order Form for material handling rates for trucks and commercial carriers. Freeman personnel will determine what constitutes a cartload.

FREEMAN privately owned vehicle cart service

F R E E M A N

13101 Almeda Rd
Houston, TX 77045
(713) 433-2400 Fax: (469) 621-5613
FreemanHoustonES@freemanco.com

OUTBOUND MATERIAL HANDLING
AND SHIPPING LABELS

NAME OF SHOW: **KATY HOME & GARDEN SHOW / JANUARY 28-29, 2012**
COMPANY NAME: _____ BOOTH #: _____ BOOTH SIZE: _____ X
CONTACT NAME : _____ PHONE #: _____
E-MAIL ADDRESS : _____

For Assistance, please call (713) 433-2400 to speak with one of our experts.

For fast, easy ordering, go to www.freemanco.com/store

EVERY OUTBOUND SHIPMENT WILL REQUIRE A MATERIAL HANDLING AGREEMENT AND LABELS. WE WOULD BE HAPPY TO PREPARE THESE FOR YOU IN ADVANCE AND WILL DELIVER THEM TO YOUR BOOTH AT SHOW SITE TO REVIEW AND SIGN. TO TAKE ADVANTAGE OF THIS SERVICE, PLEASE COMPLETE AND RETURN THIS FORM.

SHIPPING INFORMATION

FROM: SHIPPER/EXHIBITOR NAME: _____
BILLING ADDRESS: _____
CITY: _____ STATE/ PROVINCE: _____ ZIP/ POSTAL CODE: _____

SHIP TO: COMPANY NAME: _____
DELIVERY ADDRESS: _____
CITY: _____ STATE/ PROVINCE: _____ ZIP/ POSTAL CODE: _____
PHONE#: _____ ATTN: _____
SPECIAL INSTRUCTIONS: _____

METHOD OF SHIPMENT

PLEASE CHECK DESIRED METHOD OF SHIPMENT BELOW

FREEMAN EXHIBIT TRANSPORTATION

- 1 Day: Delivery next business day
- 2 Day: Delivery by 5:00 P.M. second business day
- Expedited
- Deferred: Delivery within 3-4 business days
- Standard Ground
- Specialized: Pad wrapped, uncrated, or truckload
- OTHER COMMON CARRIER _____
- OTHER VAN LINE _____
- OTHER AIR FREIGHT _____
 - Next Day
 - 2nd Day
 - Deferred

CARRIER PHONE #: _____

Once your shipment is packed and ready to be picked up, please return the Material Handling Agreement to the Exhibitor Services Center.

Verify the piece count, weight and that a signature is on the Material Handling Agreement prior to shipping out.

SHIPMENTS WITHOUT PAPERWORK TURNED IN WILL BE RETURNED TO OUR WAREHOUSE AT EXHIBITOR'S EXPENSE.

Freeman will make arrangements for all Freeman Exhibit Transportation shipments. Arrangements for pick-up by other carriers is the responsibility of the exhibitor. During exhibitor move-out, when time permits, Freeman will attempt a courtesy phone call to your carrier to confirm the scheduled pick-up.

DESIRED NUMBER OF LABELS: _____

PAYMENT & LABOR

YOU ARE ENTERING A CONTRACT WHICH LIMITS YOUR POSSIBLE RECOVERY IN CASE OF LOSS OR DAMAGE.

The terms and conditions set forth below become a part of the Contract between FREEMAN and you, the EXHIBITOR. Acceptance of said terms and conditions will be construed when any of the following conditions are met:

- THE METHOD OF PAYMENT FORM IS SIGNED; OR
- AN ORDER FOR LABOR, SERVICES AND/OR RENTAL EQUIPMENT IS PLACED BY EXHIBITOR WITH FREEMAN; OR
- WORK IS PERFORMED ON BEHALF OF EXHIBITOR BY LABOR SECURED THROUGH FREEMAN.

DEFINITIONS

For purposes of this Contract, "FREEMAN" or "The Freeman Companies" means Freeman Decorating Services, Inc., Freeman Decorating Ltd., Freeman Exhibit, AVW-TELAV Inc., Freeman Transportation, Hoffend Xposition, Stage Rigging, Inc., Kerry Technical Services, TFC, Inc., Freeman Electrical Services, and their respective employees, directors, officers, agents, assigns, affiliated companies, and related entities including, but not limited, to any subcontractors FREEMAN may appoint. The term "EXHIBITOR" means the Exhibitor, its employees, agents, representatives, and any Exhibitor Appointed Contractors ("EAC").

PAYMENT TERMS

Full payment, including any applicable tax, is due in advance or at show site. All payments must be in U.S. funds and all checks must be drawn on a U.S. bank. Orders received without advance payment or after the deadline date will incur additional After Deadline charges as indicated on each order form. All materials and equipment are on a rental basis for the duration of the show or event and remain the property of FREEMAN except where specifically identified as a sale. All rentals include delivery, installation, and removal from EXHIBITOR'S booth. In case of cancellation of any orders or services by EXHIBITOR, a one-hour "per person, per hour" charge will be applied for all labor orders that are not canceled in writing at least 24 hours prior to the scheduled start time. If Prestige Carpet, Custom-Cut Carpet, Modular Rental Exhibits and any other custom-order items or services have already been provided at the time of cancellation, fees will remain at 100% of the original charge. If the Show or Event is canceled because of reasons beyond FREEMAN'S control, EXHIBITOR remains responsible for all charges for services and equipment provided up to and including the date of cancellation. FREEMAN will not issue refunds to EXHIBITOR of any payments made before the date of cancellation. It is EXHIBITOR'S responsibility to advise the FREEMAN Service Center Representative of problems with any orders, and to check the EXHIBITOR'S invoice for accuracy prior to the close of the Show or Event. If EXHIBITOR is exempt from payment of sales tax, FREEMAN requires an exemption certificate for the State in which the services are to be used. Resale certificates are not valid unless EXHIBITOR is rebilling these charges to its customers. For International EXHIBITORS, FREEMAN requires 100% prepayment of advance orders, and any order or services placed at show site must be paid at the show. For all others, should there be any pre-approved unpaid balance after the close of the show; terms will be net, due and payable in DALLAS, TEXAS upon receipt of invoice. Effective 30 days after invoice date, any unpaid balance will bear a FINANCE CHARGE at the lesser of the maximum rate allowed by applicable law, or 1.5% per month, which is an ANNUAL PERCENTAGE RATE of 18%, and future orders will be on a prepaid basis only. If any finance charge hereunder exceeds the maximum rate allowed by applicable law, the finance charge shall automatically be reduced to the maximum rate allowed, and any excess finance charge received by FREEMAN shall be either applied to reduce the principal unpaid balance or refunded to the payer. If past due invoices or invoice balances are placed with a collection agency or attorney for collection or suit, EXHIBITOR agrees to pay all legal and collection costs. THESE PAYMENT TERMS AND CONDITIONS SHALL BE GOVERNED BY AND CONSTRUED IN ACCORDANCE WITH THE LAWS OF THE STATE OF TEXAS. In the event of any dispute between the EXHIBITOR and FREEMAN relative to any loss, damage, or claim, such EXHIBITOR shall not be entitled to and shall not withhold payment, or any partial payment, due to FREEMAN for its services, as an offset against the amount of any alleged loss or damage. Any claims against FREEMAN shall be considered a separate transaction, and shall be resolved on its own merits. FREEMAN reserves the right to charge EXHIBITOR for the difference between the EXHIBITOR'S estimate of charges and the actual charges incurred by EXHIBITOR, or for any charges that FREEMAN may be obligated to pay on behalf of EXHIBITOR, including without limitation, any shipping charges. If EXHIBITOR provides a credit card for payment and charges are rejected by the EXHIBITOR'S credit card company for any reason, FREEMAN hereby provides notice that it reserves the right, and EXHIBITOR authorizes FREEMAN, to continue to attempt to secure payment through that credit card for as long as unpaid balances remain on the EXHIBITOR'S account.

LABOR UNDER THE SUPERVISION OF EXHIBITOR RESPONSIBILITIES:

EXHIBITOR shall be responsible for the performance of labor provided under this option. It is the responsibility of EXHIBITOR to supervise labor secured through FREEMAN in a reasonable manner as to prevent bodily injury and/or property damage and also to direct them to work in a manner that is in compliance with FREEMAN'S Safe Work Rules and/or Federal, State, County and Local ordinances, rules and/or regulations, including but not limited to Show or Facility Management rules and/or regulations. It is the responsibility of EXHIBITOR to check in with the Service Desk to pick up labor, and to return to the Service Desk to release labor when the work is completed.

INDEMNIFICATION:

EXHIBITOR agrees to indemnify, hold harmless, and defend FREEMAN from and against any and all demands, claims, causes of action, fines, penalties, damages, liabilities, judgments, and expenses (including but not limited to reasonable attorneys' fees and investigation costs) for bodily injury, including any injury to FREEMAN employees, and/or property damage arising out of work performed by labor provided by FREEMAN but supervised by EXHIBITOR. Further, the EXHIBITOR'S indemnification of FREEMAN includes any and all violations of Federal, State, County or Local ordinances, "Show Regulations and/or Rules" as published and/or set forth by Facility or Show Management, and/or directing labor provided by FREEMAN to work in a manner that violates any of the above rules, regulations, and/or ordinances.

IMPORTANT

PLEASE REFER TO FREEMAN'S "MATERIAL HANDLING TERMS & CONDITIONS" AS IT RELATES TO MATERIAL HANDLING SERVICES AND TO THE "SERVICE REQUEST & SHIPPING INSTRUCTIONS CONTRACT" AS IT RELATES TO TRANSPORTATION SERVICES. CONTRACT TERMS DEPEND ON THE NATURE OF SERVICES SECURED BY EXHIBITOR THROUGH FREEMAN. TERMS & CONDITIONS MAY VARY FOR EACH TYPE OF SERVICE ORDERED THROUGH FREEMAN.

MATERIAL HANDLING

YOU ARE ENTERING A CONTRACT WHICH LIMITS YOUR POSSIBLE RECOVERY IN CASE OF LOSS OR DAMAGE. Acceptance of said terms and conditions will be construed when any of the following conditions are met: This Material Handling Agreement (MHA) is signed; Exhibitor's materials are delivered to Freeman's warehouse or to an event site for which Freeman is the Official Show Contractor; or an order for labor and/or rental equipment is placed by Exhibitor with Freeman.

1. **DEFINITIONS.** For purposes of this Contract, Freeman means Freeman Decorating Services, Inc., and its employees, directors, officers, agents, assigns, affiliated companies, and related entities. The term "Exhibitor" means the Exhibitor, its employees, agents, representatives, any Exhibitor Appointed Contractors ("EAC"), and any persons receiving services from Freeman.

2. **PACKAGING/CRATES AND STORAGE.** Freeman shall not be responsible for damage to loose or uncrated materials, padwrapped or shrink-wrapped materials, glass breakage, concealed damage, carpets in bags or poly, or improperly packed or labeled materials. Freeman shall not be responsible for crates and packaging which are unsuitable for handling, in poor condition, or have prior damage. Crates and packaging should be of a design to adequately protect contents for handling by forklift and similar means. Freeman will not accept any crates or packaging containing hazardous materials. Goods requiring cold storage and those in accessible storage are stored at Exhibitor's own risk. **FREEMAN ASSUMES NO RESPONSIBILITY OR LIABILITY FOR LOSS OR DAMAGE TO GOODS IN COLD STORAGE OR ACCESSIBLE STORAGE.**

3. **EMPTY CONTAINERS.** Empty container labels will be available at the show site service desk. Affixing labels to the containers is the sole responsibility of Exhibitor or its representative. All previous labels must be removed or obliterated. Freeman assumes no responsibility for: error in the above procedures; removal of containers with old empty labels and without Freeman labels; or improper information on empty labels. **FREEMAN WILL NOT BE LIABLE FOR LOSS OR DAMAGE TO CRATES AND CONTAINERS OR THEIR CONTENTS WHILE SAME ARE IN EMPTY CONTAINER STORAGE.**

4. **INBOUND/OUTBOUND SHIPMENTS.** There may be a lapse of time between the delivery of shipment(s) to the booth and the arrival of Exhibitor, or a lapse of time between the completion of packing and the actual pickup of materials from the booths for loading onto a carrier and *during such times, Exhibitor materials will be left unattended.* **FREEMAN IS NOT RESPONSIBLE OR LIABLE FOR ANY LOSS, DAMAGE, THEFT, OR DISAPPEARANCE OF EXHIBITOR'S MATERIALS AFTER THEY HAVE BEEN DELIVERED TO EXHIBITOR'S BOOTH AT SHOW SITE OR BEFORE THEY HAVE BEEN PICKED UP FOR RELOADING AT THE CONCLUSION OF THE EVENT.** Freeman recommends the securing of security services from Facility or Show Management. All MHA's submitted to Freeman by Exhibitor will be checked at the time of pickup from the booth and corrections will be made where discrepancies exist between the quantities of items on any form submitted to Freeman and the actual count of such items in the booth at the time of pickup.

5. **DELIVERY TO THE CARRIER FOR RELOADING.** Freeman assumes no responsibility for loss, damage, theft, or disappearance of Exhibitor's materials after same have been delivered to Exhibitor's appointed carrier, shipper, or agent for transportation after the conclusion of the show. Freeman loads the materials onto the carrier under directions from the carrier or driver of that carrier. Any loading onto the carrier will be understood to be under the exclusive supervision and control of the carrier or driver of that carrier. **FREEMAN ASSUMES NO RESPONSIBILITY FOR LOSS, DAMAGE, THEFT OR DISAPPEARANCE OF EXHIBITOR'S MATERIALS THAT ARISES OUT OF IMPROPERLY LOADED OR LABELED MATERIALS.**

6. **DESIGNATED CARRIERS.** Freeman shall have the authority to change the Exhibitor designated carrier if that carrier does not pick up the shipment(s) at the appointed time. Where no disposition is made by Exhibitor, materials may be taken to a warehouse to await Exhibitor's shipping instructions and Exhibitor agrees to be responsible for charges relating to such rerouting and handling. In no event shall Freeman be responsible for any loss resulting from such rerouting designation.

7. **FORCE MAJEURE.** Freeman's performance hereunder is subject to, and Freeman shall not be responsible for loss, delay, or damage due to, strike, lockouts, work stoppages, natural elements, vandalism, Act of God, civil disturbances, power failures, explosions, acts of terrorism or war, or for any other cause beyond Freeman's reasonable control, nor for ordinary wear and tear in the handling of materials.

8. **CLAIM(S) FOR LOSS.** Exhibitor agrees that any and all claims for loss or damage must be submitted to Freeman immediately at the show site, and in any case not later than **thirty (30) business days** after the conclusion of the show or exposition. (For purposes of claim reporting, the "conclusion" of the show shall be construed as the time when Exhibitor's materials are delivered to the carrier for transportation from the show site or from Freeman's warehouse). All claims reported after thirty (30) days will be rejected. In no event shall a suit or action be brought against Freeman **more than two (2) years** after the date of loss or damage occurred.

a. **PAYMENT FOR SERVICES MAY NOT BE WITHHELD.** In the event of any dispute between the Exhibitor and Freeman relative to any loss, damage, or claim, Exhibitor shall not be entitled to and shall not withhold payment, or any partial payment, due Freeman for its services as an offset against the amount of any alleged loss or damage. Any claims against Freeman shall be considered a separate transaction and shall be resolved on their own merits.

b. **MAXIMUM RECOVERY.** If found liable for any loss, Freeman's sole and exclusive **MAXIMUM** liability for loss or damage to Exhibitors materials and Exhibitor's sole and exclusive remedy is limited to \$50 (USD) per pound per article with a maximum liability of \$100.00 (USD) per item, or \$1,500.00 (USD) per shipment whichever is less. All shipment weights are subject to correction and final charges determined by the actual or re-weighted weight of the shipment.

c. **LIMITATION OF LIABILITY.** IN NO EVENT SHALL FREEMAN BE LIABLE TO THE EXHIBITOR OR TO ANY OTHER PARTY FOR SPECIAL, COLLATERAL, EXEMPLARY, INDIRECT, INCIDENTAL, OR CONSEQUENTIAL DAMAGES, WHETHER SUCH DAMAGES OCCUR EITHER PRIOR OR SUBSEQUENT TO, OR ARE ALLEGED AS A RESULT OF, TORTIOUS CONDUCT, FAILURE OF THE EQUIPMENT OR SERVICES OF FREEMAN OR BREACH OF ANY OF THE PROVISIONS OF THIS CONTRACT, REGARDLESS OF THE FORM OF ACTION, WHETHER IN CONTRACT OR IN TORT, INCLUDING STRICT LIABILITY AND NEGLIGENCE, EVEN IF FREEMAN HAS BEEN ADVISED OR HAS NOTICE OF THE POSSIBILITY OF SUCH DAMAGES. SUCH EXCLUDED DAMAGES INCLUDE BUT ARE NOT LIMITED TO LOST PROFITS, LOSS OF USE, AND INTERRUPTION OF BUSINESS OR OTHER CONSEQUENTIAL OR INDIRECT ECONOMIC LOSSES.

9. **DECLARED VALUE.** Declarations of Declared Value are between the Exhibitor and the selected Carrier ONLY, and are in no way an extension of Freeman's maximum liability stated herein. Freeman will use commercially reasonable efforts to transmit the Declared Value instructions to the selected Carrier; however, **FREEMAN WILL NOT BE LIABLE FOR ANY CLAIM ARISING FROM THE TRANSMITTAL OF, OR FAILURE TO TRANSMIT, DECLARED VALUE INSTRUCTIONS TO THE CARRIER NOR FOR FAILURE OF THE CARRIER TO UPHOLD THE DECLARED VALUE OR ANY OTHER TERM OF CARRIAGE.**

10. **JURISDICTION / VENUE.** THIS CONTRACT SHALL BE CONSTRUED UNDER THE LAWS OF THE STATE OF TEXAS WITHOUT GIVING EFFECT TO ITS CONFLICT OF LAWS RULES. EXCLUSIVE VENUE FOR ALL DISPUTES ARISING OUT OF OR RELATING TO THIS CONTRACT SHALL RESIDE IN A COURT OF COMPETENT JURISDICTION IN DALLAS COUNTY, TEXAS.

11. **INDEMNIFICATION.** Exhibitor agrees to indemnify and forever hold harmless Freeman and its employees, directors, officers, and agents from and against any and all demands, claims, causes of action, fines, penalties, damages (including consequential), liabilities, judgments, and expenses (including but not limited to reasonable attorneys' fees and investigation costs) arising out of or contributed to by Exhibitor's negligent supervision of any labor secured through Freeman; Exhibitor's negligence, willful misconduct, or deliberate act, or the negligence, willful misconduct, or deliberate act of Exhibitor's employees, agents, representatives, customers, invitees and/or any Exhibitor Appointed Contractors (EAC) at the show or exposition to which this Contract relates, including but not limited to the misuse, improper use, unauthorized alteration, or negligent handling of Freeman's equipment; Exhibitor's violation of Federal, State, County or Local ordinances; and/or Exhibitor's violation of Show Regulations and/or Rules as published and set forth by Facility and/or Show Management.

12. **LIEN.** Exhibitor grants Freeman a security interest in and a lien on all of Exhibitor's goods (including without limitation all equipment) that is from time to time in the possession of Freeman and all the proceeds thereof, including without limitation insurance proceeds (the "Collateral"), to secure the prompt and full payment and performance of all Exhibitor's indebtedness for monies paid, by Freeman on its behalf, services performed, materials and/or labor from time to time provided by Freeman to or for the benefit of Exhibitor ("Obligations"). Freeman shall have all the rights and remedies of a secured party under the Uniform Commercial Code, as may be amended from time to time ("UCC"), and any notice that Freeman is required to give under the UCC of a time and place of a public sale or the time after which any private sale or other intended disposition of any Collateral is to be made shall be deemed to constitute reasonable notice if such notice is mailed by registered or certified mail at least five (5) days prior to such action. Freeman may hold and not deliver any of the Collateral to Exhibitor for so long as there are any Obligations that remain unpaid or unsatisfied.

13. **WAIVER & RELEASE.** Exhibitor, as a material part of the consideration to Freeman for material handling services, waives and releases all claims against Freeman with respect to all matters for which Freeman has disclaimed liability pursuant to the provisions of this Contract.

14. **DRIVER LIABILITY WAIVER.** IN CONSIDERATION OF FREEMAN PERMITTING ENTRANCE TO THE PREMISES, YOU, YOUR EMPLOYER, THE OWNER OF THE TRUCK AND/OR EQUIPMENT THAT YOU ARE OPERATING (TRUCKOWNER) AND YOU AS AGENT OF YOUR EMPLOYER AND THE TRUCKOWNER, HEREBY ASSUME ALL RISK OF INJURY OR HARM TO YOURSELF AND OTHERS AND DAMAGE TO YOUR PROPERTY AND PROPERTY BELONGING TO YOUR EMPLOYER OR OTHERS ARISING FROM YOUR ACTIVITIES WHILE BEING PERMITTED TO ENTER THE PREMISES. YOU AGREE TO ENTER AT YOUR OWN RISK. YOU HAVE FULL KNOWLEDGE OF ANY RISK INVOLVED IN THIS ACTIVITY. YOU RECOGNIZE THE HAZARDS AND ARE AWARE OF ALL THE RULES FOR SAFE OPERATION. YOUR EMPLOYER, THE TRUCKOWNER, AND YOU AGREE TO INDEMNIFY AND HOLD HARMLESS FREEMAN, ITS EMPLOYEES, OFFICERS, DIRECTORS, AGENTS, ASSIGNS, AFFILIATED COMPANIES AND RELATED ENTITIES, AGAINST ANY AND ALL LIABILITY, ACTIONS, CLAIMS, AND DAMAGES OF ANY KIND WHATSOEVER ARISING FROM YOUR ACTIVITIES WHILE BEING PERMITTED TO ENTER THE PREMISES.

F R E E M A N

F R E E M A N

R U S H

R U S H

DO NOT DELAY

DO NOT DELAY

MUST DELIVER BY JANUARY 20, 2012

MUST DELIVER BY JANUARY 20, 2012

TO: _____

EXHIBITOR NAME

TO: _____

EXHIBITOR NAME

C/O: FREEMAN

13101 ALMEDA RD

HOUSTON, TX 77045

C/O: FREEMAN

13101 ALMEDA RD

HOUSTON, TX 77045

WAREHOUSE

WAREHOUSE

EVENT: **KATY HOME & GARDEN SHOW**

EVENT: **KATY HOME & GARDEN SHOW**

BOOTH NO: _____ NO. _____ OF _____ PCS

BOOTH NO: _____ NO. _____ OF _____ PCS

THE ABOVE LABELS ARE PROVIDED FOR YOUR CONVENIENCE.
PLACE ONE ON EACH PIECE SHIPPED TO ENSURE PROPER DELIVERY.
IF MORE LABELS ARE NEEDED, COPIES ARE ACCEPTABLE.

F R E E M A N

F R E E M A N

R U S H

R U S H

DO NOT DELAY

DO NOT DELAY

CANNOT DELIVER BEFORE JANUARY 26, 2012

CANNOT DELIVER BEFORE JANUARY 26, 2012

TO: _____
EXHIBITOR NAME

TO: _____
EXHIBITOR NAME

**C/O: FREEMAN
LEONARD E MERRELL CENTER
428 FM 1463**

**C/O: FREEMAN
LEONARD E MERRELL CENTER
428 FM 1463**

KATY, TX 77494

KATY, TX 77494

SHOW SITE

SHOW SITE

EVENT: KATY HOME & GARDEN SHOW

EVENT: KATY HOME & GARDEN SHOW

BOOTH NO: _____ NO. _____ OF _____ PCS

BOOTH NO: _____ NO. _____ OF _____ PCS

THE ABOVE LABELS ARE PROVIDED FOR YOUR CONVENIENCE.
PLACE ONE ON EACH PIECE SHIPPED TO ENSURE PROPER DELIVERY.
IF MORE LABELS ARE NEEDED, COPIES ARE ACCEPTABLE.